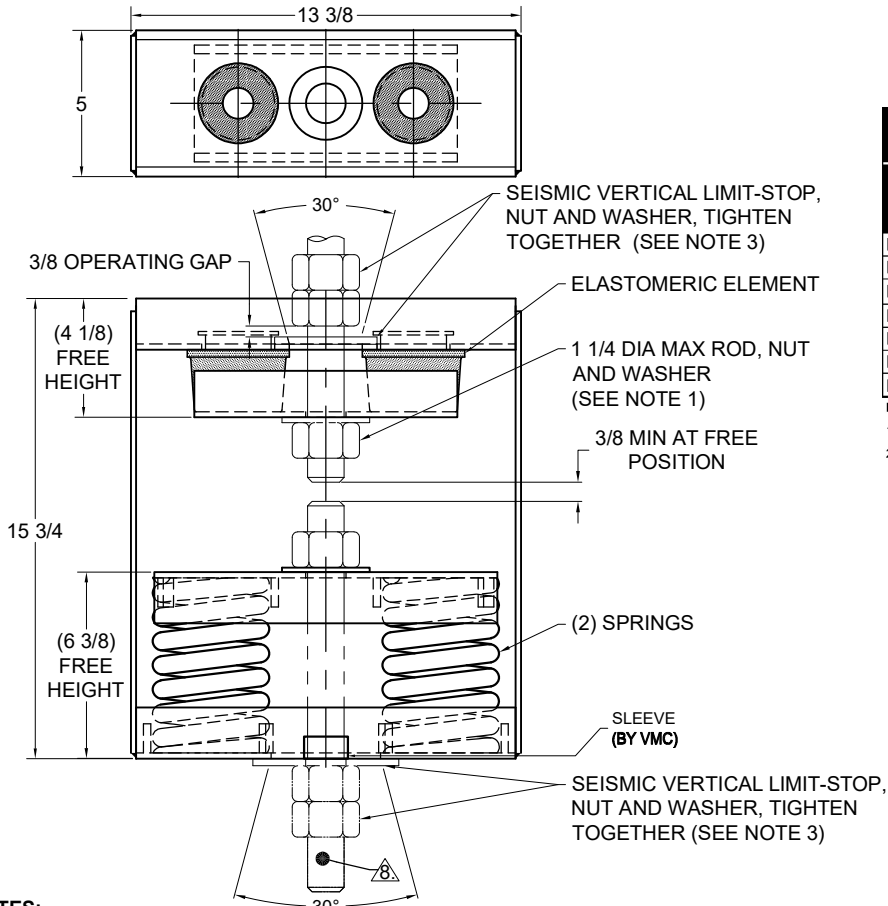


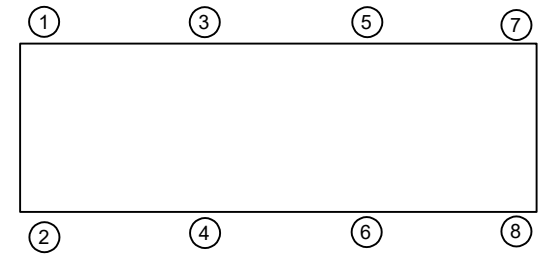
REV.	DESCRIPTION	DATE	BY



**MODEL H2RSA-2E PRE-COMPRESSED DOUBLE ELASTOMERIC & SPRING ANGULARITY HANGERS FOR 2" NOMINAL DEFLECTION**

MODEL	MAX LOAD (LBS)	DEFLECTION (IN)	SPRING RATE (LB/IN)	SPRING COLOR CODE	ELEMENT LOAD & COLOR CODE
H2RSA-2E-2800PR	2800	2.24	1498	RED	(2) RE-D-1900 GREEN
H2RSA-2E-3200N*PR	3200	2.55	1500	TAN/RED	(2) RE-D-1900 GREEN
H2RSA-2E-3600PR	3600	2.18	2106	DK GRAY	(2) RE-D-1900 GREEN
H2RSA-2E-4100PR	4100	1.98	2500	DK BLUE	(2) RE-D-3050 GRAY
H2RSA-2E-4500N*PR	4500	1.99	2778	DK BLUE/ BLACK	(2) RE-D-3050 GRAY
H2RSA-2E-4920N*PR	4920	1.93	3220	DK BLUE/ RED	(2) RE-D-3050 GRAY
H2RSA-2E-5400N*PR	5400	2.08	3292	DK BLUE/ DK GREEN	(2) RE-D-3050 GRAY

NOTES:  
 1. TWO NESTED SPRINGS YIELD THIS LOAD. THE COLOR CODE IS FOR OUTER SPRING/ INNER SPRING.  
 2. RATED DEFLECTIONS ARE WITHIN 25% OF NOMINAL. HIGHER DEFLECTIONS ARE ALLOWED IF THEY MEET SPECIFICATIONS.



- NOTES:**
- HANGER RODS, NUTS AND WASHERS BY OTHERS, AS SHOWN. INSTALL WASHER .165 THK. MIN. X 2-7/8 O.D. MIN. WITH REQUIRED INSIDE DIAMETER TO ACCOMMODATE ROD SIZE IN USE. THIS CAN BE ACCOMPLISHED BY USING A SINGLE WASHER OR BY STACKING NOT MORE THAN TWO WASHERS.
  - STANDARD FINISH: HANGER BOX - PAINTED, POWDER COATED OR GALVANIZED STEEL, SPRING - POWDER COATED.
  - SEISMIC VERTICAL LIMIT- STOP HARDWARE REQUIRED FOR SEISMIC APPLICATIONS.
  - ALL DIMENSIONS IN INCHES. INTERPRET PER ANSI Y14. ALL DIMENSIONS ARE FOR REFERENCE AND SHOWN AS NOMINAL.
  - ALL SPRINGS ARE DESIGNED WITH MINIMUM 50% OVER-TRAVEL.
  - PRE-COMPRESSED 50% OF SPRING RATED DEFLECTION. HANGER BOXES AVAILABLE PRE-COMPRESSED UP TO THEIR DESIGNATED MAX. LOAD. PERCENTAGE OF PRE-COMPRESSION TO BE DETERMINED BY ENGINEERED APPLICATION OR AS REQUESTED BY CUSTOMER. CONSULT FACTORY FOR POSSIBLE ADDITIONAL PARAMETERS AND/OR LIMITATIONS.
  - HANGER BOXES WITH AN ELASTOMERIC ELEMENT HAVE UP TO AN ADDITIONAL 1/2" NOMINAL DEFLECTION.
  - ROD EXTENSION BELOW LOWER NUT EXTENDS (1.5XROD DIA.) AS SHIPPED.
  - PRE-COMPRESSED 50% OF SPRING RATED DEFLECTION.

ISOLATOR SELECTIONS	
LOC 1:	LOC 2:
LOC 3:	LOC 4:
LOC 5:	LOC 6:
LOC 7:	LOC 8:
CUSTOMER EQPT. TAG:	

NOTE: MATERIAL SHOWN IS FOR (1) SET.

OTHER MATERIALS, COMPOUNDS, OR FINISHES WITH EQUAL OR SUPERIOR PROPERTIES MAY BE SUBSTITUTED AS THEY BECOME AVAILABLE.

**CERTIFIED FOR:**

JOB NAME: \_\_\_\_\_

CUSTOMER: \_\_\_\_\_

CUSTOMER P.O.: \_\_\_\_\_

SALES ORDER: \_\_\_\_\_

**MODEL H2RSA-2E 2800-5400 LBS.  
 PRE-COMPRESSED ELASTOMERIC AND  
 SPRING ANGULARITY HANGERS  
 2 INCH DEFLECTION**



SCALE:	NONE	Member <b>VISCMA</b>
SHEET:	1 OF 1	
DRAWING NO.:		REVISION